



The Belgian Energy Research Alliance

Our ticket to the Champion's League of European Energy Research

29 May 2012



Contents

- Background
- Eera
- Bera
- Results



Background

- Excellent energy research in Belgium




Background

- Limited critical mass
 - No group more than 120 FTE
- Belgian cooperation did not exist anymore



**No strategic role for
Belgium on the European
level**



Contents

- Background
- Era
- Bera
- Results

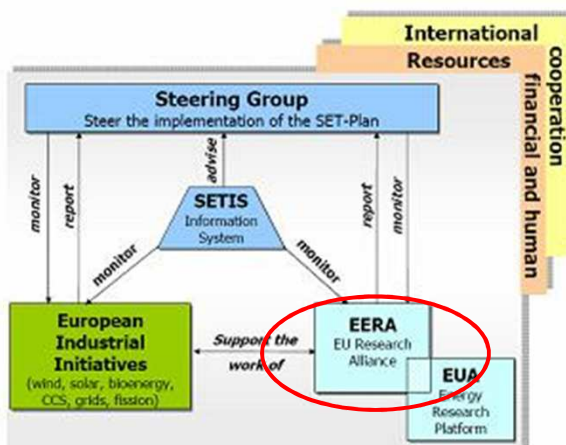


Eera

One of the pillars of the SET plan

Initiative of R&D players

Very well received by the EC





Eera


- Goals of the Eera
 - Accelerate energy technology development through joint programmes
 - Integrate dispersed R&D resources
 - Set up partnerships with industry



Eera

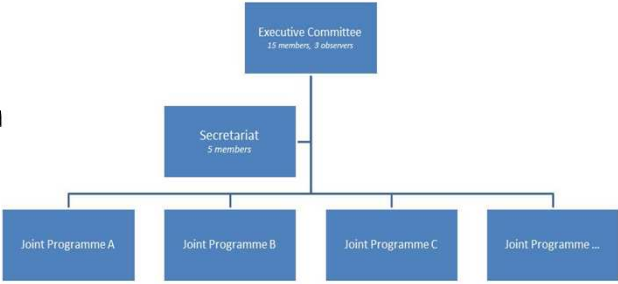
- Eera reaches the entire continent






Eera

- Strategic coordination by the Executive Committee
- ExCo = only Eera members
- Two-year terms




```

graph TD
    EC["Executive Committee  
15 members, 3 observers"] --- S["Secretariat  
5 members"]
    EC --- JPA["Joint Programme A"]
    EC --- JPB["Joint Programme B"]
    EC --- JPC["Joint Programme C"]
    EC --- JPD["Joint Programme ..."]
    
```




Eera

- Exco 2009 - 2011



EERA EXCO members

www.eera-set.eu



Eera

- Work revolves around joint programmes
- Open to all public research, with ≥ 5 FTE/year commitment
- ExCo decides on creation, follow-up, evaluation

| | | |
|-------------------------------|---|---------------|
| • Photovoltaic | } | June 2010 |
| • Wind | | |
| • Geothermal | | |
| • Smart Grids | } | November 2010 |
| • Bio energy | | |
| • CCS | } | November 2011 |
| • Materials Nuclear | | |
| • AMPEA | | |
| • CSP | } | November 2011 |
| • Energy Storage | | |
| • Fuel cells & H ² | | |
| • Ocean Energy | | |
| • Smart Cities | | |



Eera

- Situation end 2011
 - Belgian players in almost all joint programs
 - No representation at strategic level



Contents

- Background
- Eera
- Bera
- Results



BERA

- Take part in EERA decision making
- Coordinate internally, then join EERA JPs together
- Promote Belgian cooperation



BERA – Decision making


- No single Belgian R&D player meets the criteria for the ExCo
 - # joint programmes
 - # FTE in joint programmes
 - # total FTE in energy research
 - National and international projects



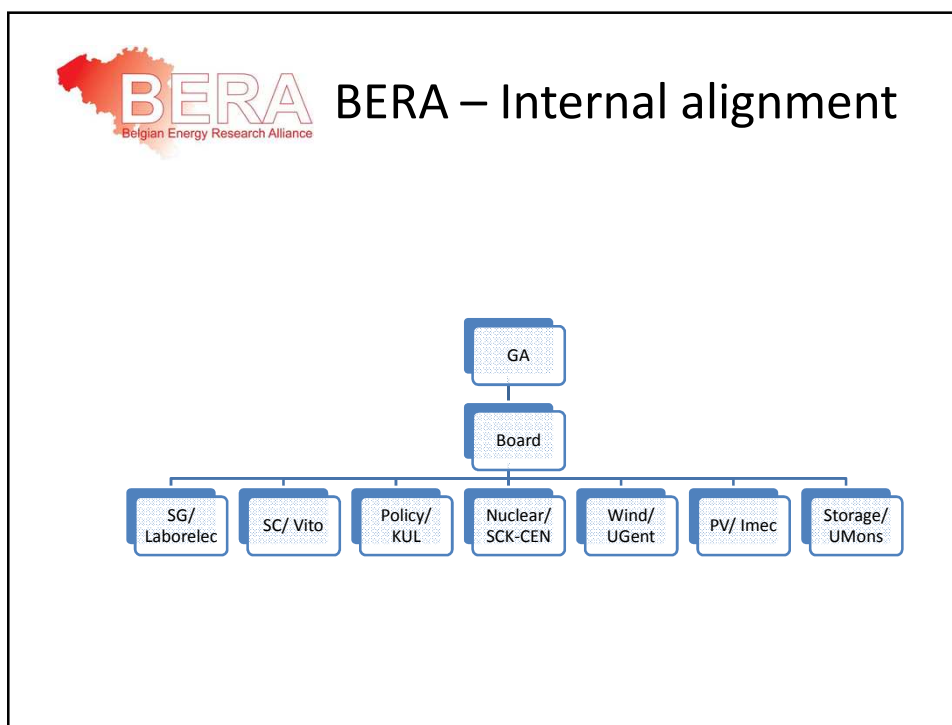
BERA – Decision making

- But together, we are the 7th largest player in Europe

| <i>Thematic area</i> | <i>personnel involved in thematic area</i> |
|--------------------------------|--|
| PV | 190 |
| Wind | 90 |
| Smart grids | 210 |
| Geothermal | 70 |
| MaFoNu | 230 |
| CCS | 60 |
| BioEnergy | 80 |
| CSP | 50 |
| Ocean Energy | 10 |
| Smart cities | 210 |
| Energy storage | 70 |
| Fuell cells and H ² | 40 |
| BERA total | 1310 |

 **BERA – Belgian cooperation**

| | Wallonia | Flanders | National |
|------------|---|----------------------|------------------------|
| Institute | Cenaero Multitel | IMEC IBBT Vito | SCK |
| University | Université de Liège Université de Mons ULB UCL FUNDP VUB UHasselt | KUL Ugent | |
| Other | Accord Wallonie | Groep T | Laborelec BBRI/WTCB |
| | | | |





BERA – Internal alignment

Thematic groups

- Mostly reflecting EERA JPs

- BERA becomes JP participant
 - Thematic group members, become associate participants to Bera
 - Lead partner is representative at EERA JP level

- Board decides

- 1 FTE minimal commitment



Contents

- Background

- Eera

- Bera

- Results



Results

- All JPs covered
- 30 FTE /year committed in SC
- 7th/6th largest player in Europe
- Member ExCo since April